

OPERATION

This heater can only be used when connected to a CZC1 wireless programmable timer. Each CZC1 can control any number of heaters. The heater has an indicator light positioned on the fascia panel. The light may be:

Green	-	when no heat is needed
Yellow	-	when some heat is needed to maintain the room temperature
Red	-	when the heater is on full power
Fast Flashing Red	-	when the heater has overheated and the Electronic Safety Control has switched the heater off.

Please refer to the CZC1 user and operating instructions for full operational details.

CONNECTION TO THE MAIN SUPPLY

Electrical installation should be carried out by a competent installer, preferably registered with NICEIC (National Inspection Council for Electrical Installation Contracting) in accordance with the 16 edition of the IEE Wiring Regulations, (BS.7671: 1992), and any relevant Local Authority Bye-Laws.

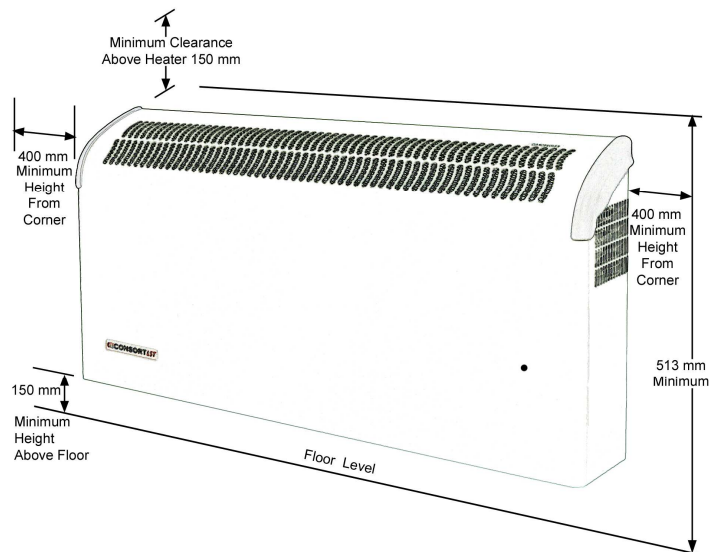
This heater is fitted with a 3-core mains supply cable and should be permanently connected to the electricity supply via a double pole switch having 3mm gap on each pole.

A switched Fused Connection unit to BS.1363. Part 4 is a recommended mains supply connection accessory to ensure compliance with safety requirements applicable to fixed-wiring installation.

ELECTRONIC SAFETY CONTROL

The appliance is fitted with an Electronic Safety Control (ES). This is a safety device which switches the heater off if, for any reason, the appliance overheats. The overheating is indicated by a fast flashing red light. The ES control can only be re-set after the appliance has cooled down. In order to re-set the ES control, proceed as follows:

- Switch the appliance off at the mains by using isolator switch and leave to cool down for approximately 5 minutes.
- Switch appliance back on and the ES control will re-set.
- Ensure that the appliance is functioning correctly. If the ES control operates again, the appliance should be checked by a competent electrician.



WALL MOUNTING

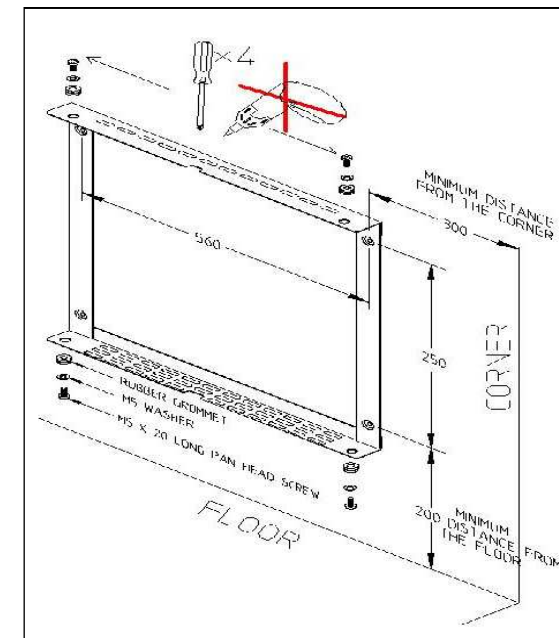
The heater must not be located immediately below a fixed socket outlet.

The Wall Mounting bracket is packed separately in the carton.

Fit the mounting brackets to the wall at the height and centers shown in the diagram.

Rest your appliance on the bottom of the mounting bracket and secure with the two top locking screws including the plain washers. **Do not over tighten.**

Now secure the appliance with two bottom locking screws including plain washers. **Do not over tighten.**



WARNING: THIS APPLIANCE MUST BE EARTHED

IMPORTANT: ALWAYS RETAIN YOUR USER INSTRUCTIONS FOR FUTURE REFERENCE

SAFETY

This equipment has been designed and manufactured to the highest international standards, but, like all electrical appliances which are operated by mains voltage, care must be taken if you are to obtain the best results and safety is to be assured.

NOTE: The appliance is not intended for use by persons (including children) with reduced physical, sensory or mental capabilities, or lack of experience and knowledge unless they have been given supervision or instruction concerning use of the appliance by a person responsible for their safety.

Children should be supervised to ensure that they do not play with the appliance

- Do NOT site the appliance into a corner.
- Do NOT site this heater in the immediate vicinity of a bath, a shower or a swimming pool.
- Do NOT operate the appliance with wet hands.
- Do NOT use the appliance in workshops or rooms where excessive dust is generated or present.
- Ensure that nothing is pushed into any aperture of this appliance.
- Do NOT touch outlet grille when the appliance is in use. (NB: the LST heaters have a maximum surface temperature of 43°C)
- Do NOT cover or restrict any aperture of the appliance when in use.
- Do NOT use the appliance if damaged.
- Do NOT leave the appliance unattended where young children are present.

This appliance meets the requirements of EU Directive 89/336 for EMC.

IF YOUR HEATER DOES NOT WORK

- Check that power is available to the heater. The neon in the control switch should be illuminated.
- Check that the fuse in the spur unit has not blown. This can be done by replacing the fuse with another suitable fuse.
- Should neither of the above remedies work, then telephone the helpline number shown in these instructions (UK ONLY).
- Check that the thermal cut-out has not operated. Follow the reset instructions given under the section headed 'Thermal Operated Cut-out'.
- Check that the heater is connected to wireless programmable thermostat CZC1. Follow the instruction given in the user instruction for CZC1, under the section 'Connect your heater to CZC1'.
- Check battery in wireless programmable thermostat. The low battery symbol should not appear.
- Do not attempt to repair the heater.

CLEANING

Always disconnect the heater from the mains before cleaning.
The heater should not require any maintenance, but it is strongly advised that it is kept clean. An occasional wipe over with a soft cloth is all that should be necessary.

- Do NOT use metal or furniture polish on any part of the heater
- Do NOT touch the heater with wet hands or in any way bring water into contact with it.

If the supply cord on this appliance is damaged, it must be replaced by a special cord which is only available from an Authorised Service Agent, or your supplier.

GUARANTEE

This guarantee is offered to you as an extra benefit and does not affect your legal rights.

All electrical appliances produced for the Company are guaranteed for one year against faulty material or workmanship. This applies only if the appliance has been used for purposes in accordance with the instructions provided and has not been connected to an unsuitable electricity supply, or subject to misuse, neglect, damage or modified or repaired by any person not authorised by us.

The correct electricity supply voltage is shown on the rating label attached to the appliance.

CUSTOMER HELPLINE

Should you need any advice on the use of your new Consort product, or should you require service or repair, please contact our Helpline:

☎ 01646 692172 Mon to Fri 8.30 am to 3.30 pm

Consort Equipment Products Limited

Thornton Industrial Estate, Milford Haven, Pembrokeshire, SA73 2RT

Tel: 01646 692172 Fax: 01646 695195

Email: enquiries@consortepl.com

Web: www.consortepl.com

CONSORT Quality Space Heaters

Using and looking after your

 **CONSORT**

CN2LSTW & CN2MLSTW

2 kW LOW SURFACE TEMPERATURE HEATERS

FOR WIRELESS CONTROL

