

MAINTENANCE

ALWAYS ENSURE THAT THE MAIN EXTERNAL ELECTRICITY SUPPLY IS SWITCHED OFF BEFORE SERVICING THIS HEATER.

To obtain the best results from the heater, it is essential to avoid the accumulation of dust and dirt within the unit on the air inlet and discharge grilles. Regular cleaning is necessary with particular attention to the removal of any dirt on the fan rotor blades. Cleaning of the fan is best carried out with a soft brush.

ELECTRONIC SAFETY CONTROL

The appliance is fitted with an Electronic Safety Control (ES). This is a safety device which switches the heater off if, for any reason, the appliance overheats. The overheating is indicated by a fast flashing red light. The ES control can only be re-set after the appliance has cooled down. In order to re-set the ES control, proceed as follows:

- Switch the appliance off at the mains by using isolator switch and leave to cool down for approximately 5 minutes.
- Switch appliance back on and the ES control will re-set.
- Ensure that the appliance is functioning correctly. If the ES control operates again, the appliance should be checked by a competent electrician.

TO REPLACE A FAN/HEATER ASSEMBLY

- a) Switch off the mains supply
- b) Release the six nuts and washers fixing the fan heater box to the discharge grille
- c) Disconnect the wiring
- d) Remove the fan heater from the box (four screws)
- e) Fit the replacement unit and re-assemble in the reverse order.

CLAUDGEN

Consort Equipment Products Ltd
Registered Office: Thornton Industrial Estate
Milford Haven, Pembrokeshire, SA73 2RT
Telephone: 01646 692172 Fax: 01646 695195

INSTALLATION, OPERATION AND MAINTENANCE INSTRUCTIONS FOR SURFACE MOUNTED WARM AIR CEILING HEATER FOR WIRELESS ELECTRONIC CONTROLS

Catalogue Number: HE7237W

RETAIN THIS LEAFLET FOR FUTURE MAINTENANCE

This Claudgen Ceiling Heater is designed for suspension from a ceiling using threaded bar. It is supplied with stud bar mounting kit and painted enclosure.

MOUNTING

The fan heater box can only be fitted one way round (see Fig.1), as 2 of the studs are offset. This ensures that the fan outlet lines up with the discharge grille and also that the wiring is always sited the same side. The diffuser is attached to the discharge grille with 4 small clips, which can be removed if necessary. The discharge grille has 4 additional studs, plus nuts/washer, to enable the unit to be chain mounted, if required. There are also extra holes in the box to enable the unit to be suspended via wires.

INSTALLATION/HANGING

Note: The appliance weighs 17 kg

Note: Optimum height above floor: 3.0 metres

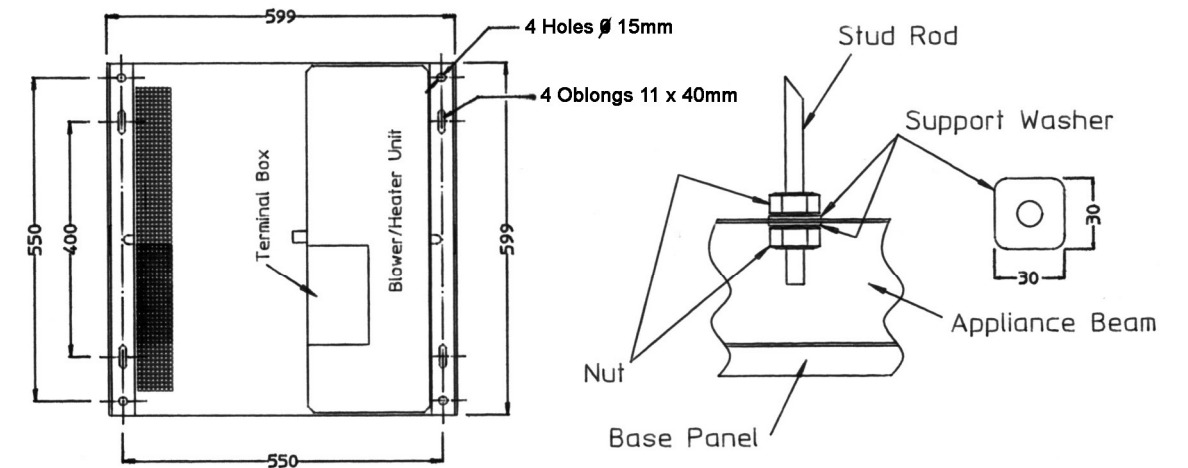
1. Split and Remove Shroud

A pair of machine screws hold each shroud half together at each joint.
A machine screw secures each shroud half to each appliance beam.
Remove these machine screws and slide each shroud half off the appliance base panel.

Note: The base panel fits inside the shroud halves.
The diffuser is already clipped into and under the base panel and need not be removed.

2. Hanging Rod Positions

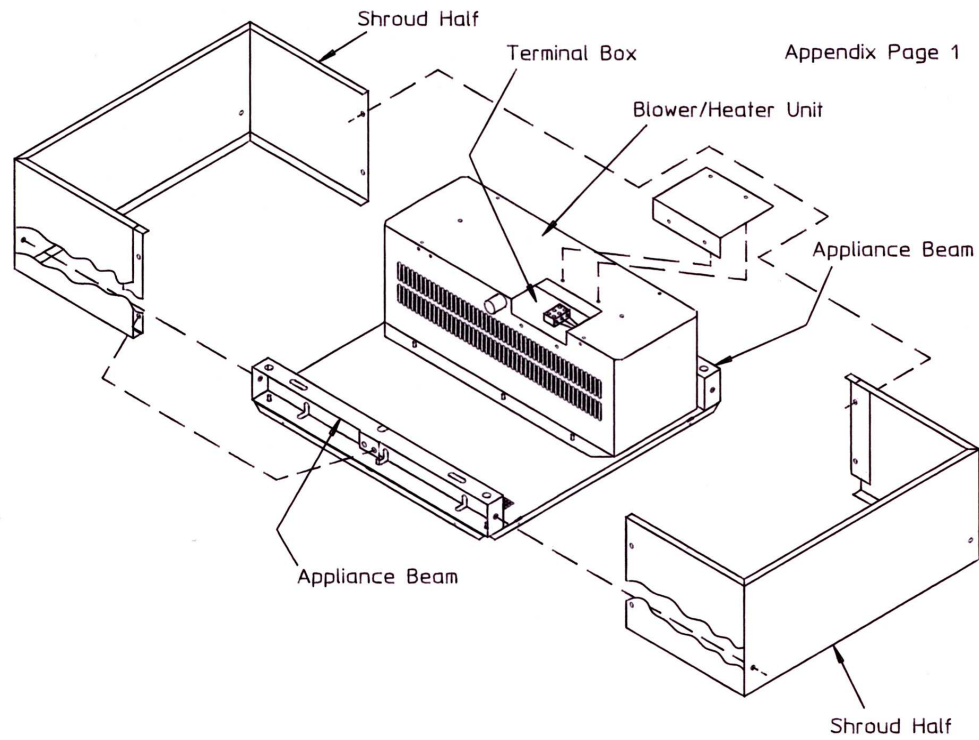
With the shroud removed the two appliance beams reveal the holes/slots shown and dimensioned below. It is required that two $\varnothing 10$ mm hanging rods (stud bars) support each appliance beam. The rods pass through and into each appliance beam. Support washers together with nuts locate and lock the appliance beams after adjustment to level the appliance.



Suspension Fixing Details

3. Replace Shroud Halves

The reverse of '1' above. Slide shrouds beneath and around base panel. Secure each shroud half to each appliance beam with machine screws. Screw shroud halves together at each joint.



CONNECTION TO THE MAIN SUPPLY

This unit is suitable for connection to 230/240V 50Hz supplies.

The HE7237W has a heating load of 3 kW.

The unit must be wired in accordance with IEE regulations for the Electrical Equipment of Buildings and the installer should ensure that a suitable isolating switch is connected in the mains supply.

Fig. 2 shows wiring diagram.

The electrical connections are accessible so that the unit can be wired in site (see Fig 1).

OPERATION

This heater can only be used when connected to a CZC1 wireless programmable timer. Each CZC1 can control any number of heaters. The heater has an indicator light positioned behind the fascia panel on the top right side. The light may be:

- Green - when no heat is needed
- Yellow - when some heat is needed to maintain the room temperature
- Red - when the heater is on full power
- Fast Flashing Red - when the heater has overheated and the Electronic Safety Control has switched the heater off.

Please refer to the CZC1 user and operating instructions for full operational details.

